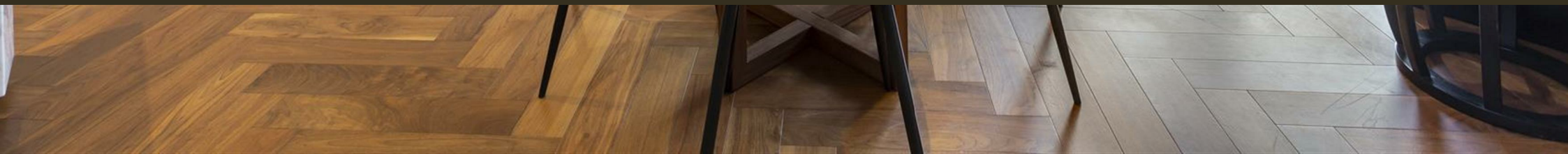




Embassy Gardens, London  
SW11

GARTONJONES.COM



# Embassy Gardens, London , SW11

GARTON JONES.COM

9 Albert  
Embankment  
London  
SE1 7SP

Sales +44 (0) 20 7735 1888  
nineelms@gartonjones.com  
www.gartonjones.com

## £895 Per Week

A stunning 2-bedroom apartment of approximately 729sq.ft (67.7sq.m) available for rent in Ambassador Building, part of the highly coveted Embassy Gardens development in the heart of Nine Elms. This spacious apartment benefits from an open plan reception room and a smart integrated kitchen leading out to a large balcony overlooking communal gardens, 2 luxury bathrooms (1 en-suite), good internal storage and interiors boasting high ceilings, walnut parquet flooring, marble counter tops in the kitchens and thermostatically controlled comfort cooling and heating. Valet Parking can be included in the rental but must be specified at the point of making an offer.

For the residents' private use there is a 24-hour concierge, cinema screening room, library & lounge, business centre, yoga studio, 2 private gymnasiums, and a very cool indoor/outdoor swimming pool. Residents of Embassy Gardens also have access to the world-famous sky pool, connecting two of the towers at Legacy Building. Amenities such as District coffee shop, Darbys' restaurant, The Alchemist cocktail bar, as well as a Waitrose convenience store all located on-site but you are also close to a host of other local shops and restaurants on your doorstep.

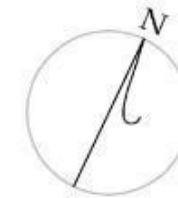
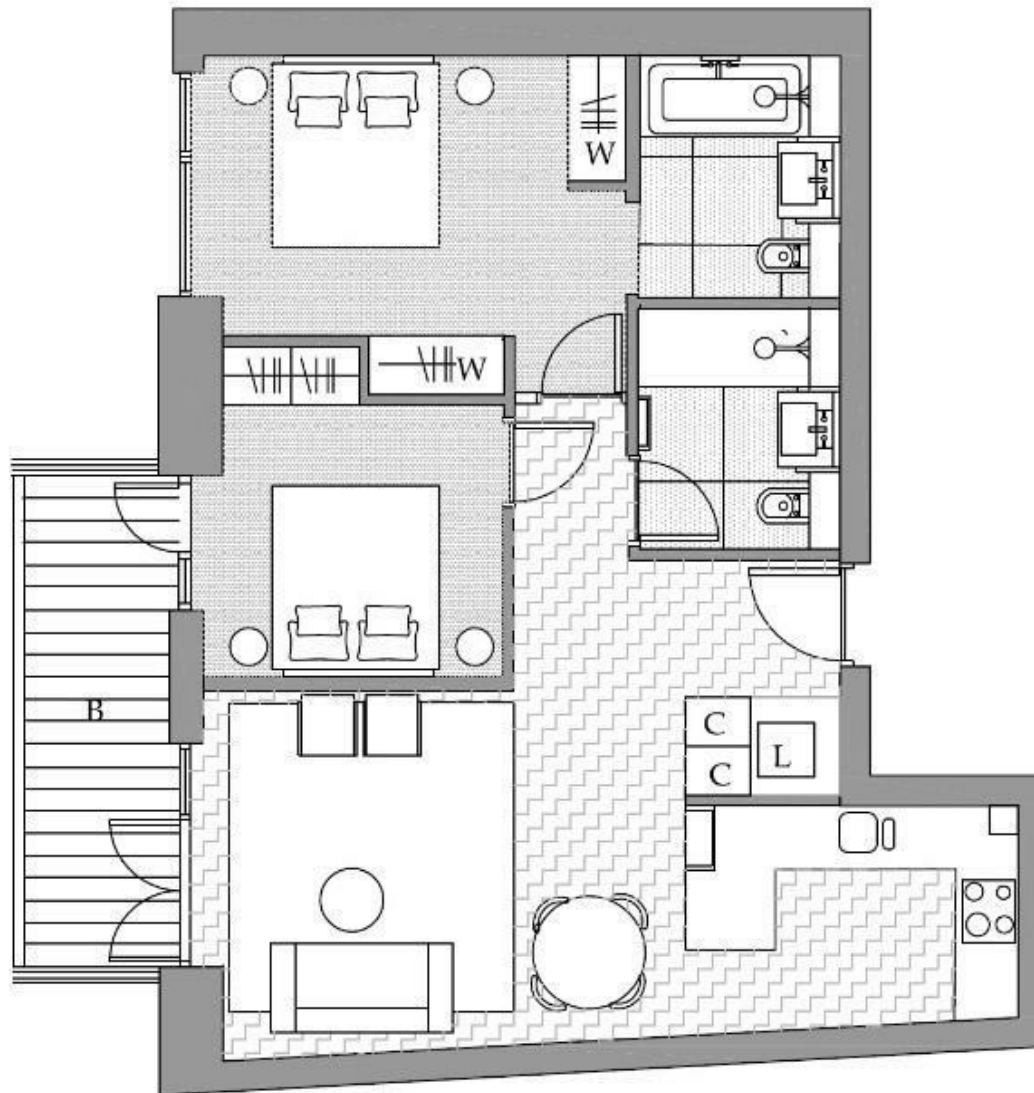
Please note furniture may differ to that shown in the current photos.

- Electricity Supply — Mains | Water Supply — Mains | Sewerage — Mains | Heating — Electric Radiators
- Broadband & Mobile Signal : Check Coverage via Ofcom
- Parking: Available via Separate Agreement
- Lift Access
- Building Safety: EWS1 Available on Request
- Council Tax Band F (London Borough of Wandsworth)
- 5 Week Security Deposit
- Holding deposit equivalent to 1 week of rent
- Rent to be payable monthly in advance
- EPC Rating B (83)

- 2 Bedrooms
- 729sq.ft (67.7sq.m)
- 2 Bathrooms (1 En-Suite)
- Open Plan Reception
- Views over Communal Gardens
- Valet Parking via Separate Agreement
- Balcony
- Sky Pool
- Residents Gyms
- 0.3 Miles to Battersea Power Station Tube



EPC certificate available on request.



**2 Bedroom**

Total area:  
67.7 sqm/729 sqft

Living area  
8200x3525mm

Bedroom 1 :  
4270x3400mm

Bedroom 2 :  
3020x2750mm

Balcony:  
7.6sqm



